

SERVICE FACILITIES

KITCHEN

Hot: 2 ovens
Plate warmer
Cold:
2 Larder
refrigerators
Glass/dishwasher
2 sinks, one hand
wash. Bar serving
hatch. Crockery, glasses, cutlery.



TOILETS

Ladies, Gents and Disabled
Nappy changing facility.

1ST FLOOR MEETING/RECEPTION ROOM

For up to 60 persons

CATHIE PRIOR ROOM

Separate entrance, used for meetings
receptions or
changing for up to
40 persons. Hirers
can access adjacent
separate toilet.



STORAGE

Under stage and in cupboards on 1st floor.

CAR PARKING

38 + 2 for disabled drivers
adjacent to hall + MSDC car park opposite
church. Total 65

HALL TEL: 01359 241681 under stairs.

HIRING TEL: 01359 245862

HALL

AREA

192 sq. m to accommodate 120 seated at
tables or 180 close seating.



LIGHTING CONTROLS

Fluorescent (Main Hall): switch top left of
door from kitchen to hall.
Stage: right hand side of proscenium arch
and top right of stage corridor.
Theatre: see stage & theatre section.

GAS FIRED AIR HEATING

Controls for the main hall are in the store
room and are preset. Wall mounted
electrical convectors are fitted elsewhere.

AIR CIRCULATION IN THE HALL

Control switch for the 3 overhead fans is in
the kitchen, top left of the door to the hall.

CHAIRS

300 in the store + 2 trolleys for moving.

TABLES

Large: approx 20 on 2 trolleys

Medium: 6 Small: 7

LICENCES The hall is licensed for public
entertainment, theatre and for the sale of
alcohol.

STAGE AND THEATRE

STAGE

Area: 12 m by 7.5m = 90 sq. m
Access: by a lift and by steps.
Trap doors: 2 (one behind the cyclorama)

LIGHTING

4 Down floods operated from a switch at
right hand side of stage arch.
All other lights from Lighting Box upstairs.
Mixing Board: Strand 200 (48 channels)

SOUND

Mackie CFX 12 Mixer with twin speakers
left and right of proscenium arch, CD
player, tape deck and amplifier. Two land
line microphones and 1 radio lapel mike.
Hearing Loop.
Acoustic panelling in main hall.
Yamaha acoustic piano.

PROJECTION

Kodak 2100 projector with 200 mm lens.
3 metre square screen which can be
pulled down from the stage roof.

PERFORMERS' CHANGING ROOM (Cathie Prior Room)

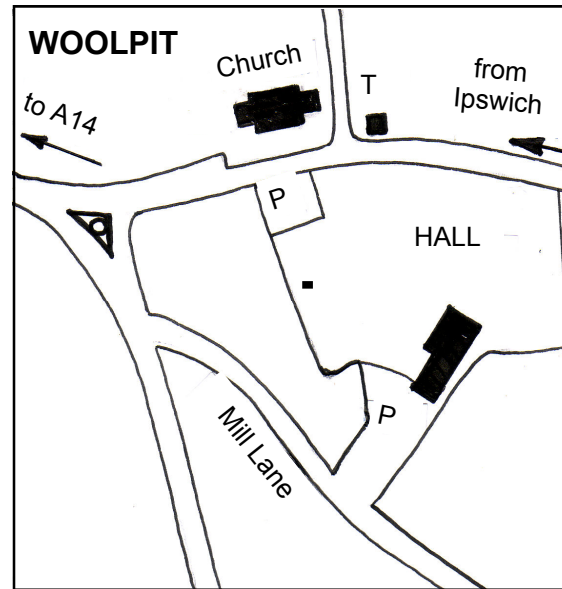
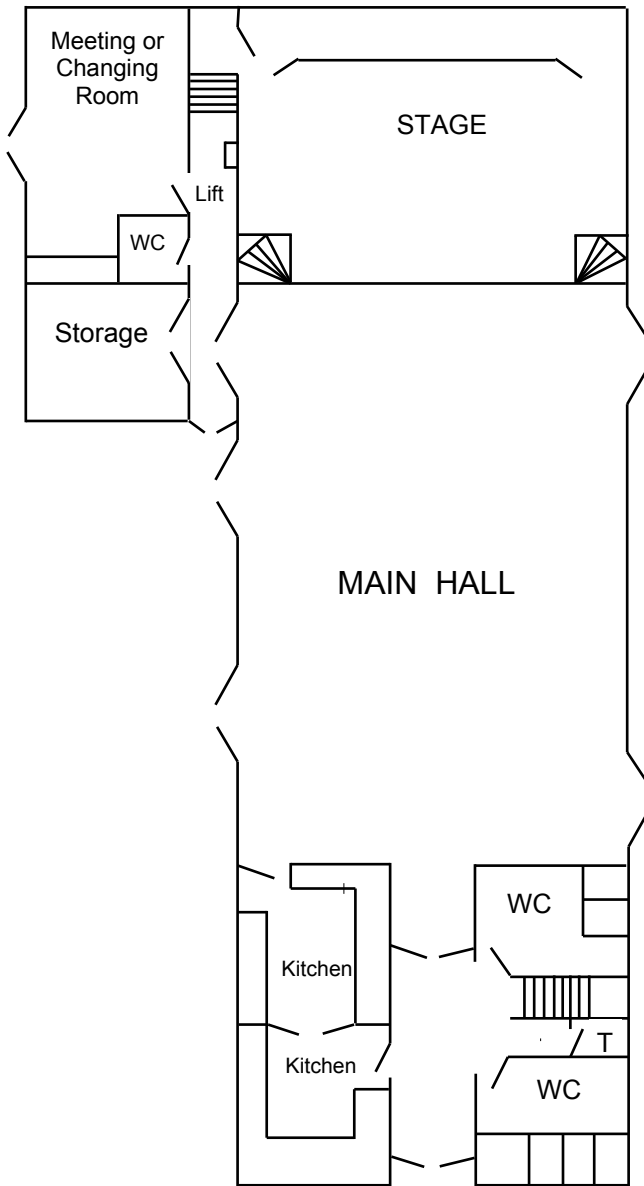
Left hand side of the stage. Fitted with mirror
and wash basin with hot and cold water.
Adjacent toilet. Wall heaters. Patio door
access to playing field.

STORAGE

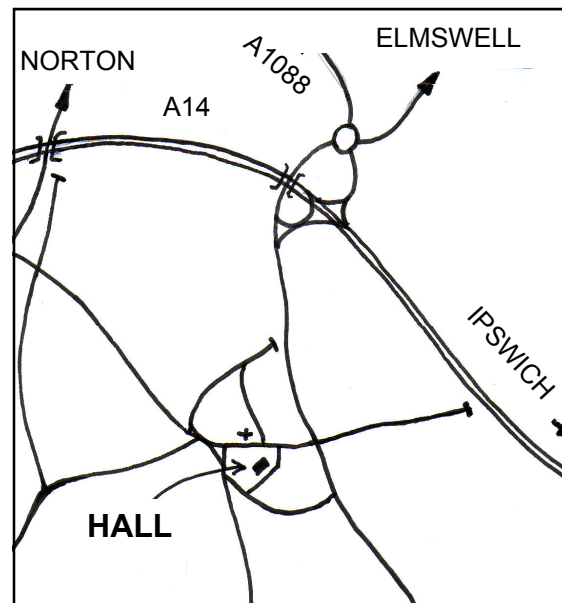
For scenery top left hand side of stage

THE HALL IS A NO SMOKING VENUE

HALL PLAN



**MILL LANE, WOOLPIT
SUFFOLK. IP30 9QX**



WOOLPIT VILLAGE HALL



MILL LANE, WOOLPIT.

